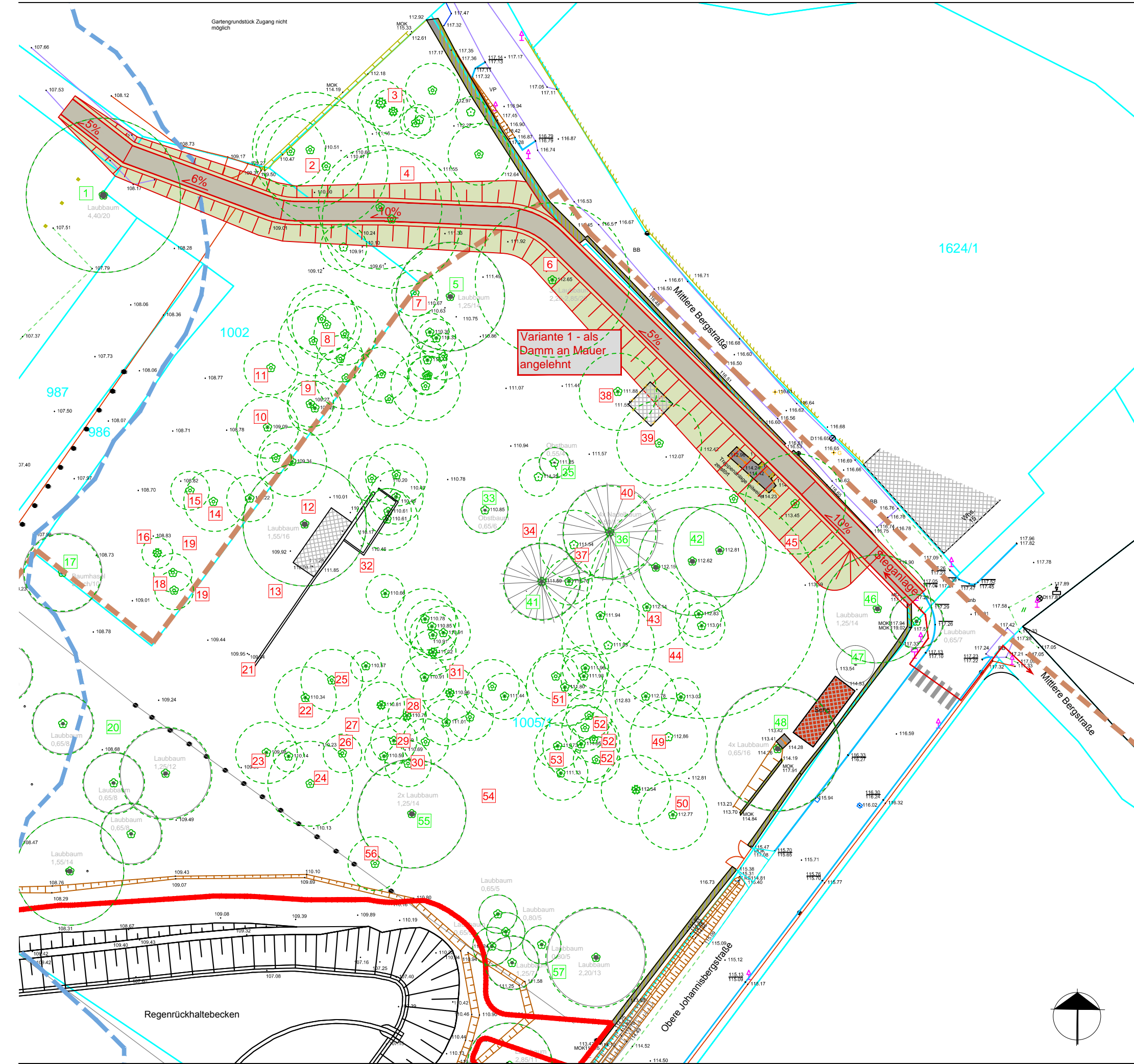
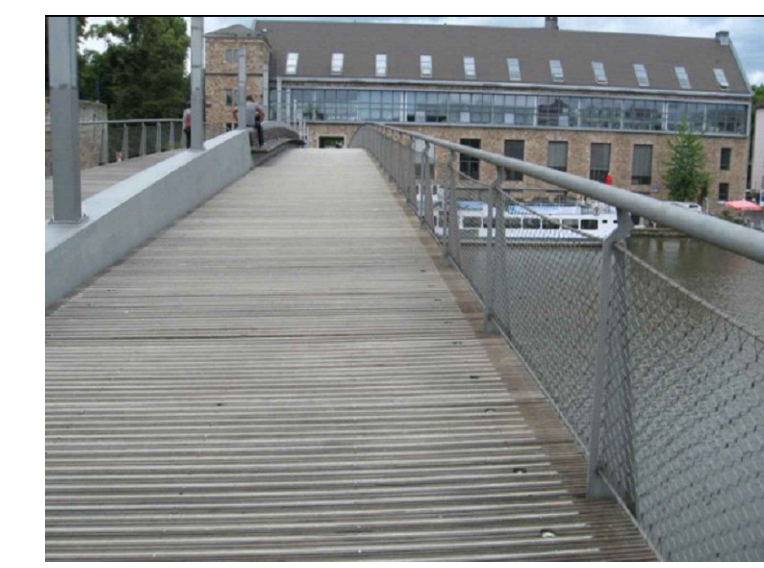
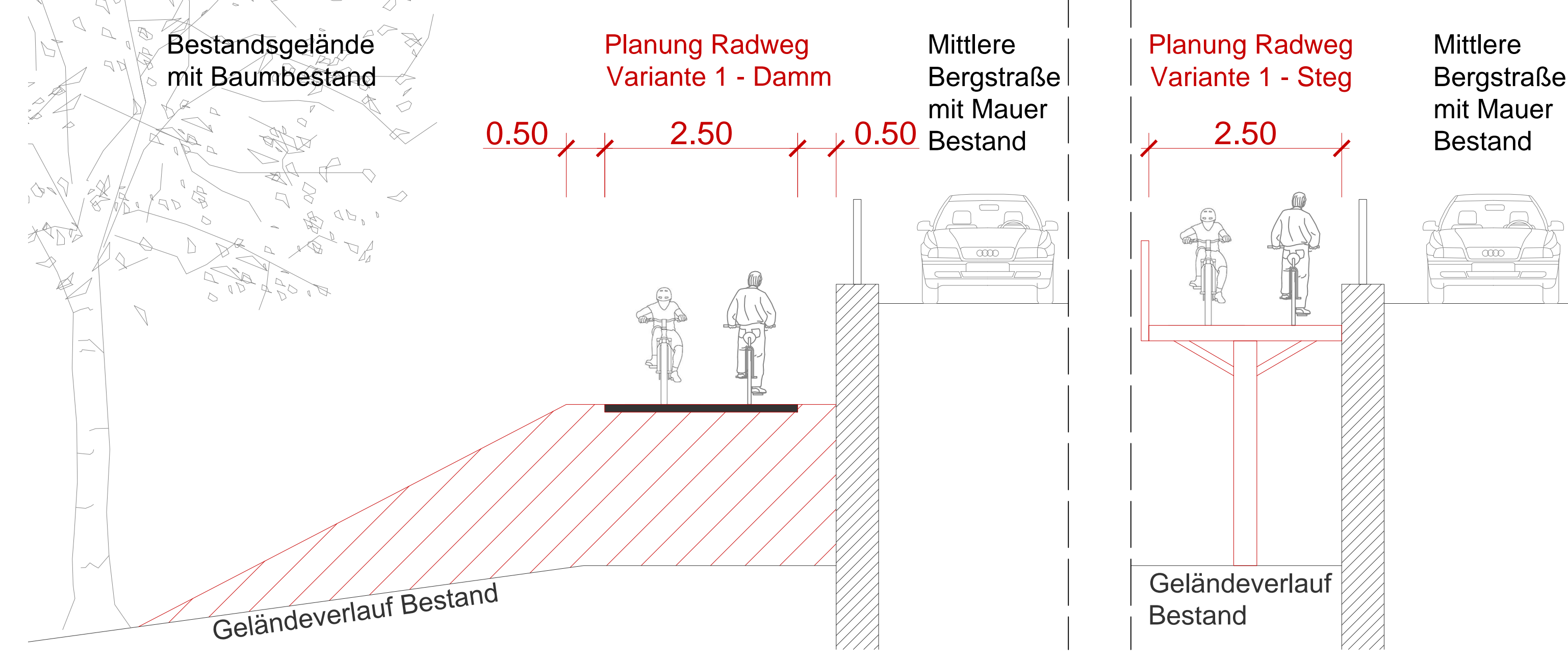


# Bauliche Gestaltung einer Radverkehrsanlage zwischen Winterkehle und Oberer Johannisbergstraße

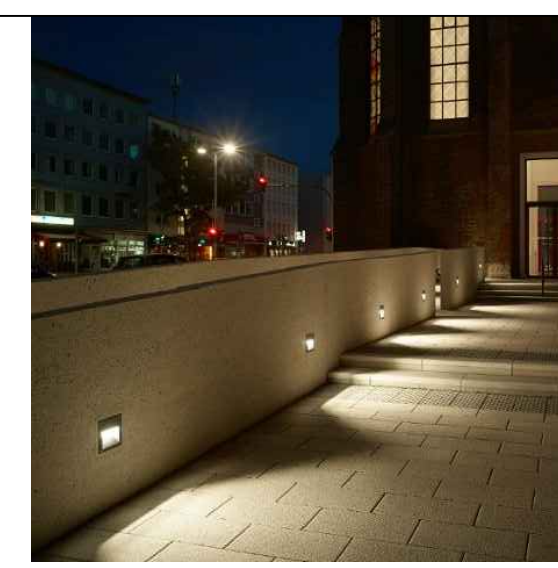
## Lageplan Maßnahmenggebiet - Variante 1 M 1:500



### Regelschnitt Variante Damm an Mauer angelehnt M 1:50

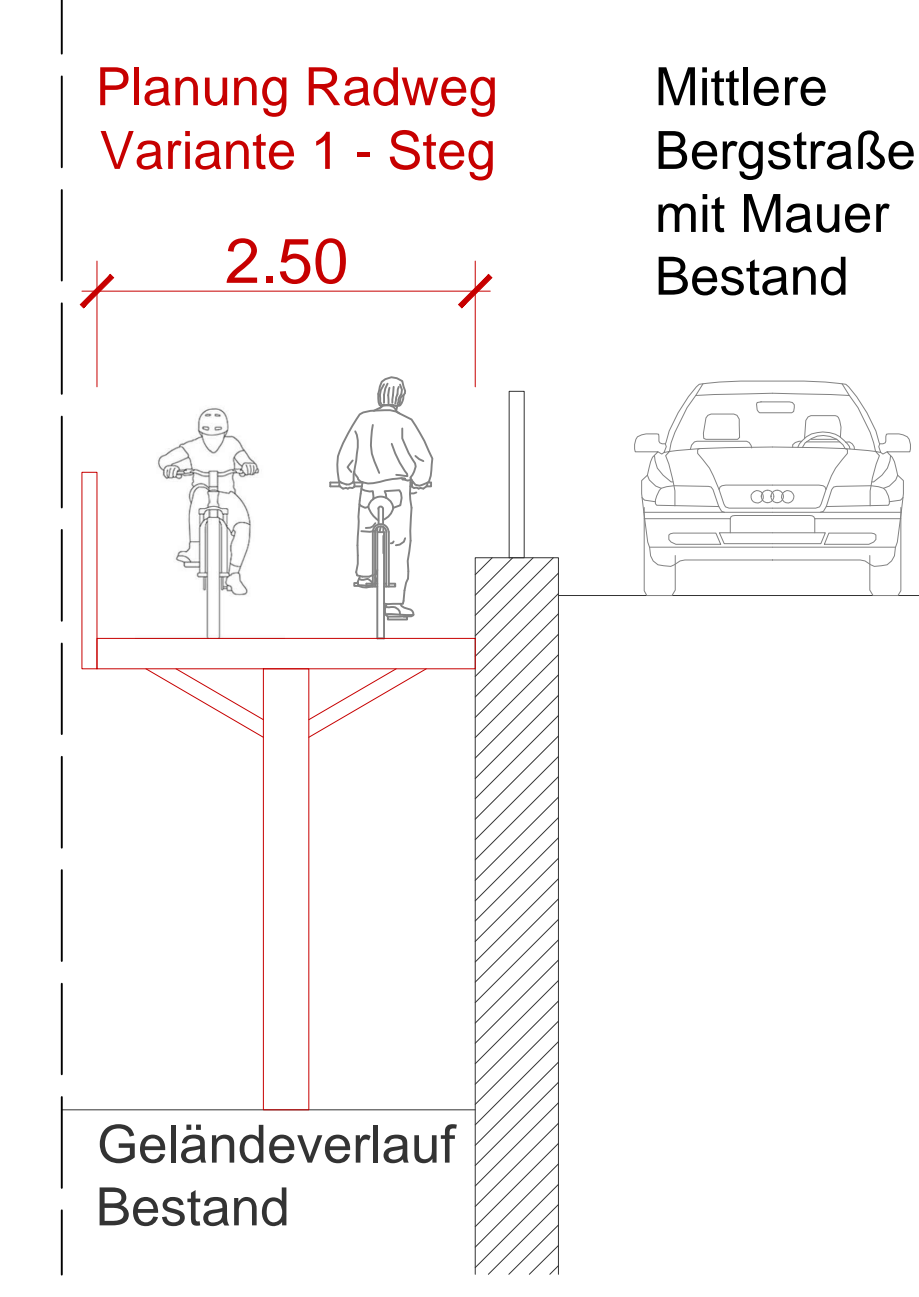


Beispiel Variante Steg an Mauer

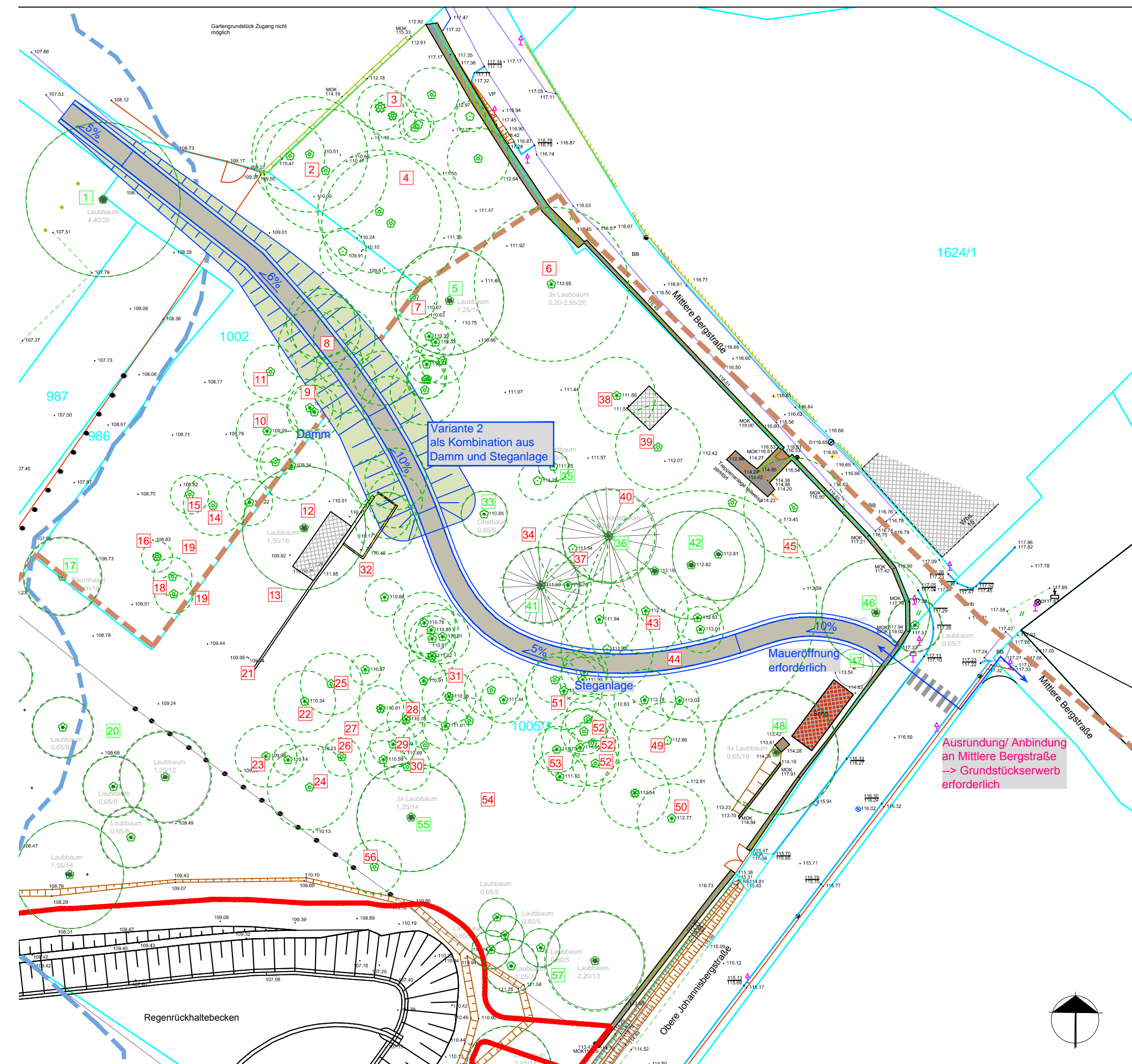


Beispiel Variante Beleuchtung in Mauer integriert

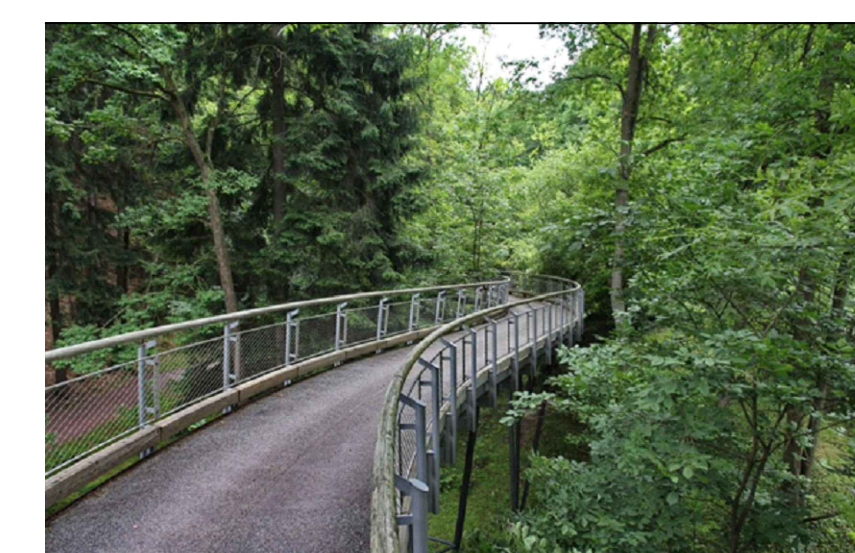
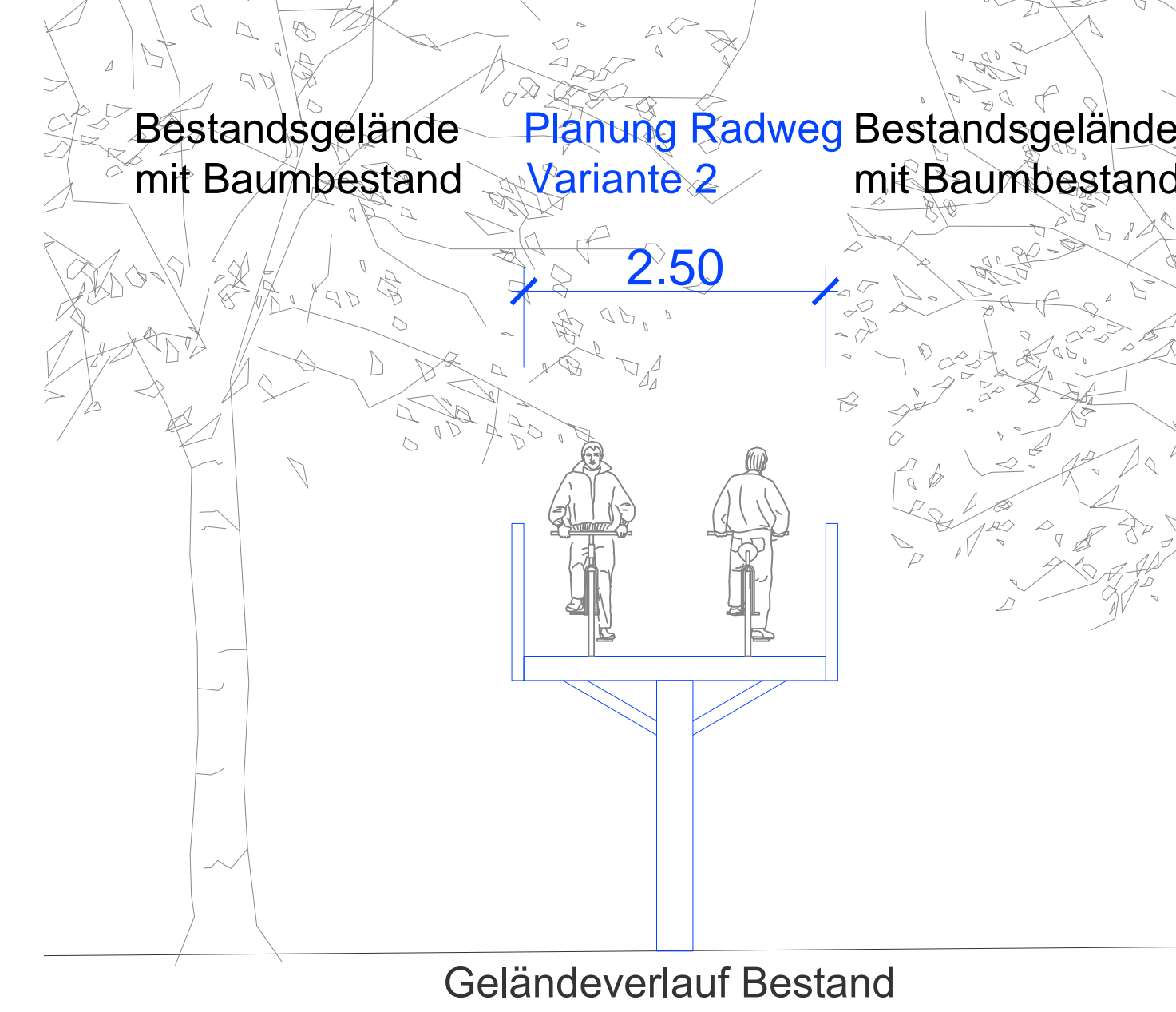
### Variante Steg Anschluss an Gehweg



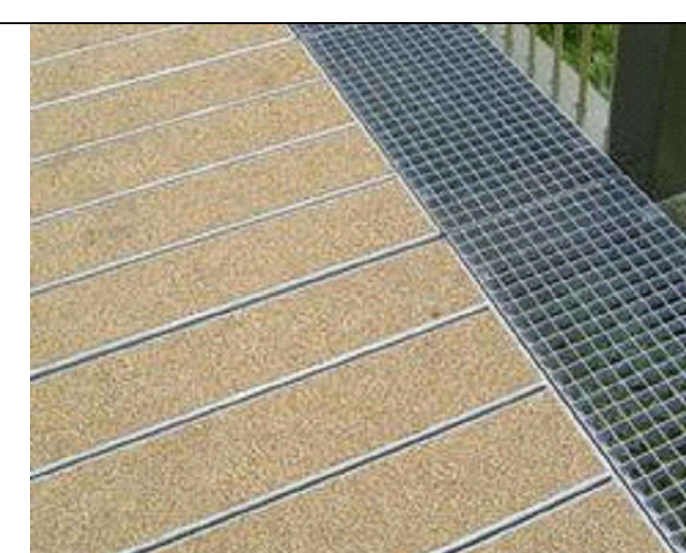
## Lageplan Maßnahmenggebiet - Variante 2 M 1:500



### Regelschnitt Steganlage freistehend M 1:50

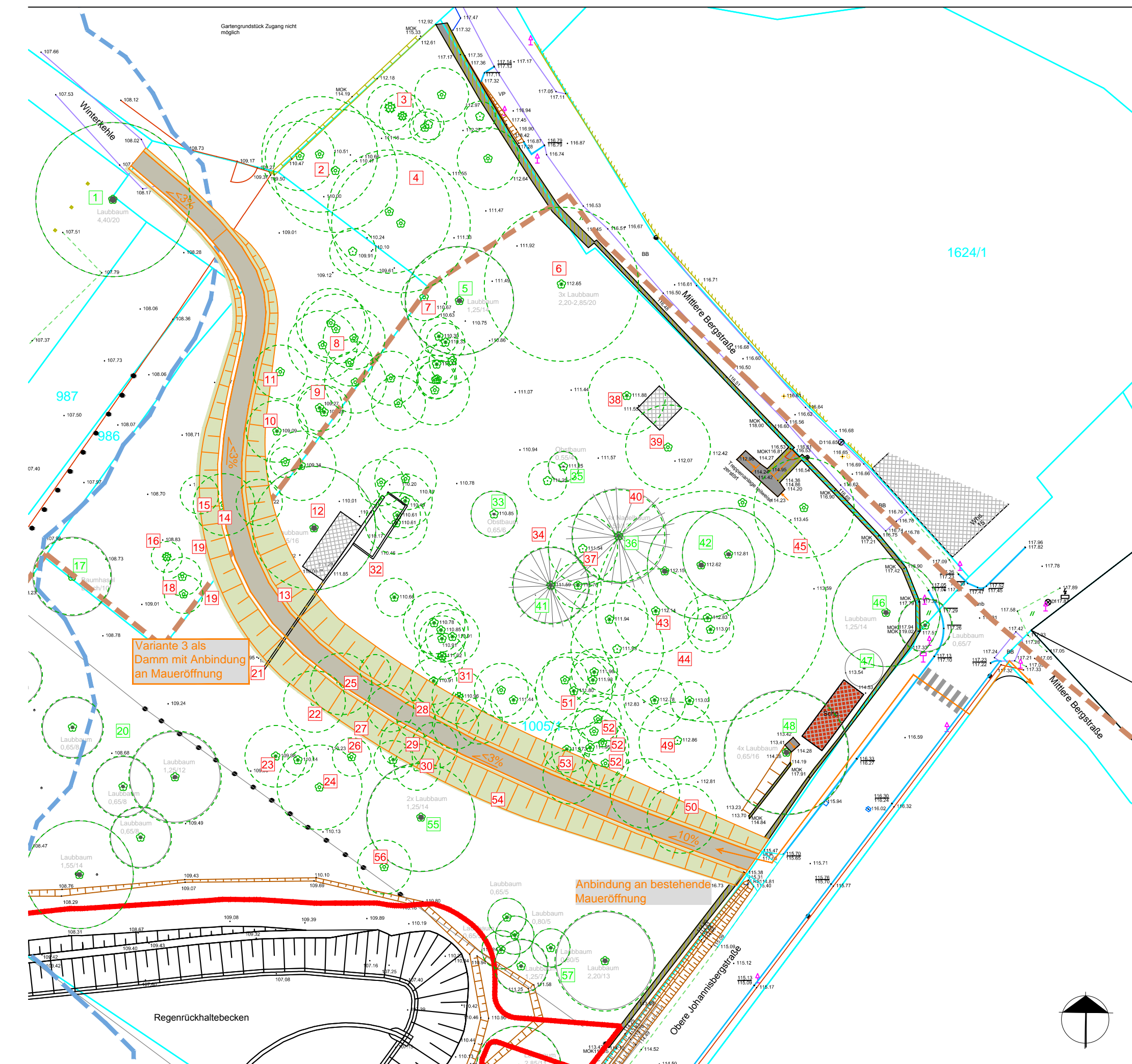


Beispiel Variante Steg frei in Gelände

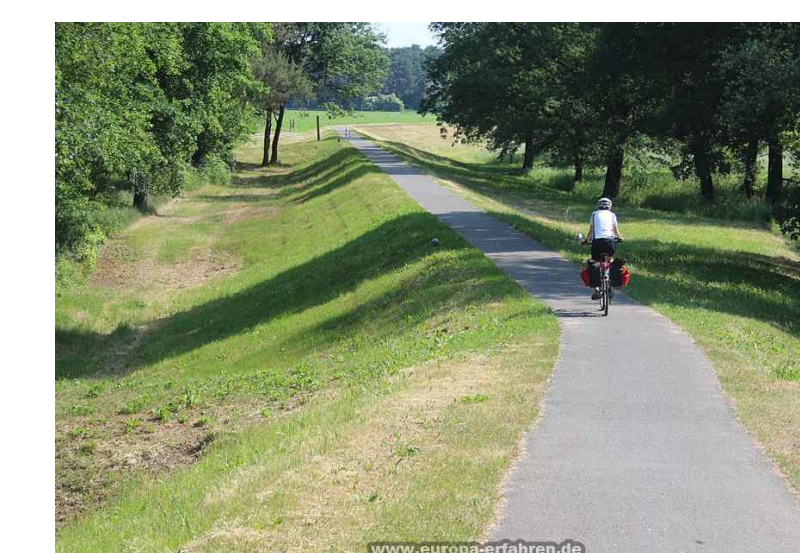
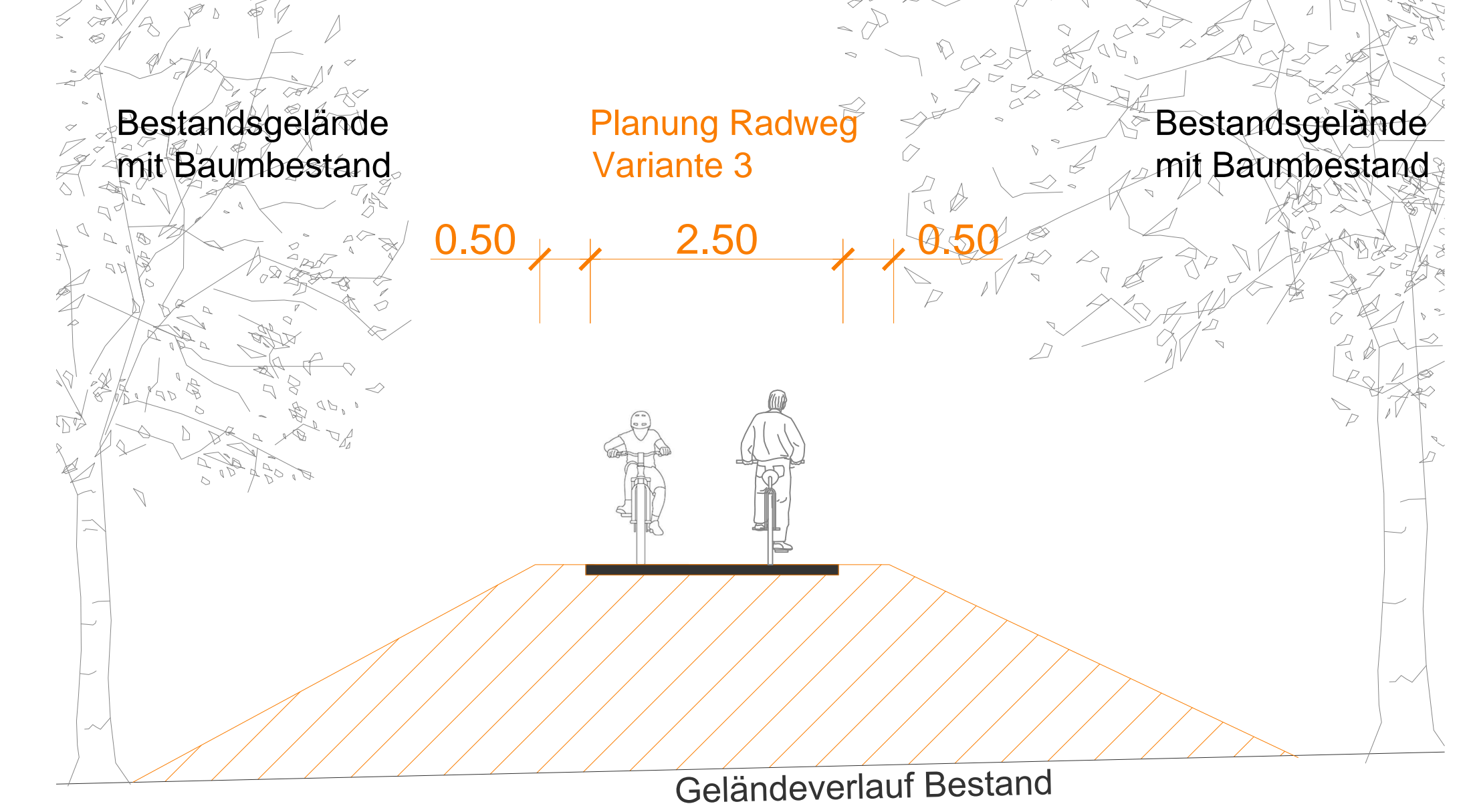


Beispiel Variante Ausbildung Belag (Bohlen mit Kunststoffbelag)

## Lageplan Maßnahmenggebiet - Variante 3 M 1:500



### Regelschnitt Dammanlage M 1:50



Beispiel Variante als Dammanlage